

PUZZLING CARTOON

- LILY'S MARBLES -



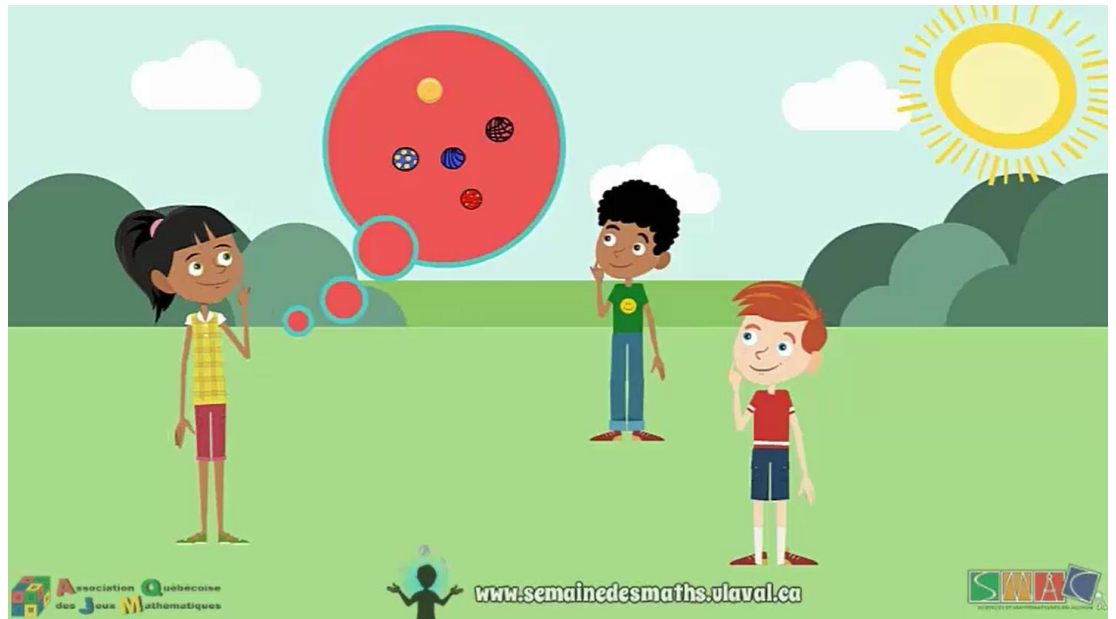
AMAZINGMATHS

Materials:

- Video of the puzzle
- Sheets of paper
- Pencils

The puzzle

Every Monday, Lily goes to the park to play marbles with her friends. The first Monday, Lily wins and adds 3 marbles to her collection. The second Monday, she wins again and adds 6 marbles to her collection. The third Monday, Lily wins once again and adds 9 marbles to her collection.



If she maintains that pace, how many marbles will Lily add to her collection the 7th Monday?



PUZZLE SOLUTION



The answer:

The 7th Monday, Lily will add 21 marbles to her collection.

The solution:

To solve this puzzle, we have to look at the number of marbles won each Monday as a logical sequence.

We know that the 1st Monday, Lily wins 3 marbles, the 2nd Monday she wins 6 marbles and the 3rd Monday, she wins 9 marbles. We are looking for the number of marbles she will win the 7th Monday, but we do not know the other numbers that complete this sequence.

Monday	1 st	2 nd	3 rd	4 th	5 th	6 th	7 th
Number of marbles won	3	6	9	?	?	?	?

If we look carefully at the table, we see that the 2nd Monday, Lily won 3 more marbles than the 1st Monday ($6 - 3 = 3$). We can make the same observation between the 2nd Monday and the 3rd Monday. Lily won 3 more marbles the 3rd Monday than the 2nd Monday ($9 - 6 = 3$).

To complete the sequence, we must **skip count by 3** until we reach the 7th Monday. So, we have to make 4 additional jumps of 3 to get the answer.

